

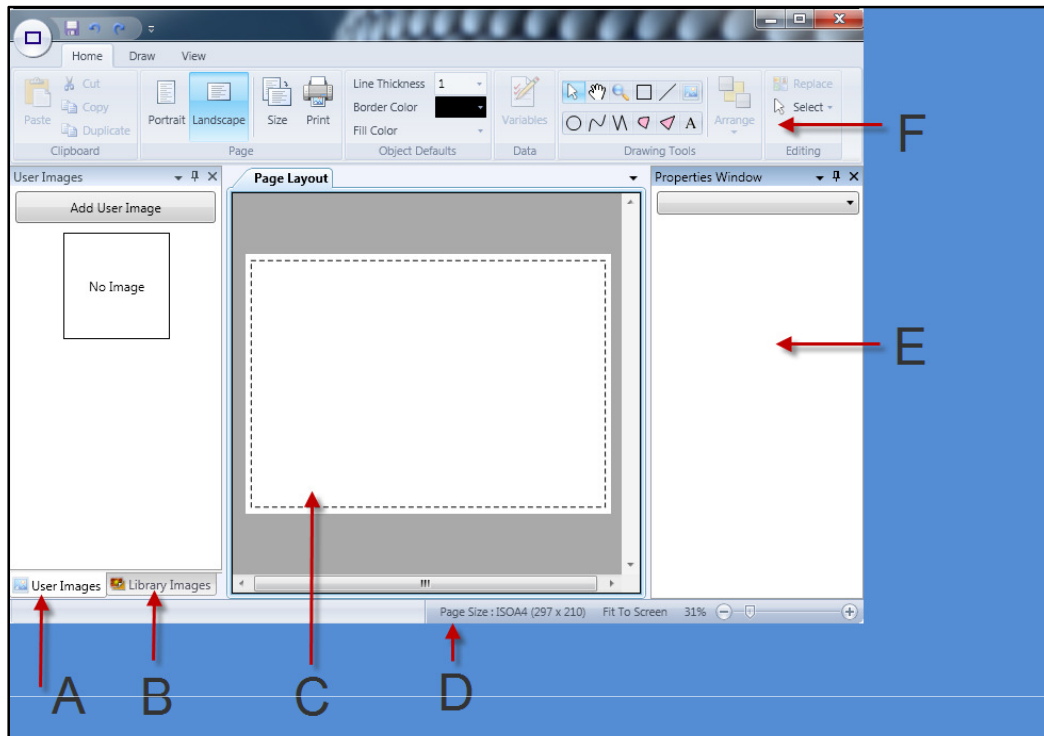
Page Layout Pro

# Quick Start Guide

For more in-depth tutorials you can view our online videos at

**[www.PageLayoutPro.com](http://www.PageLayoutPro.com)**

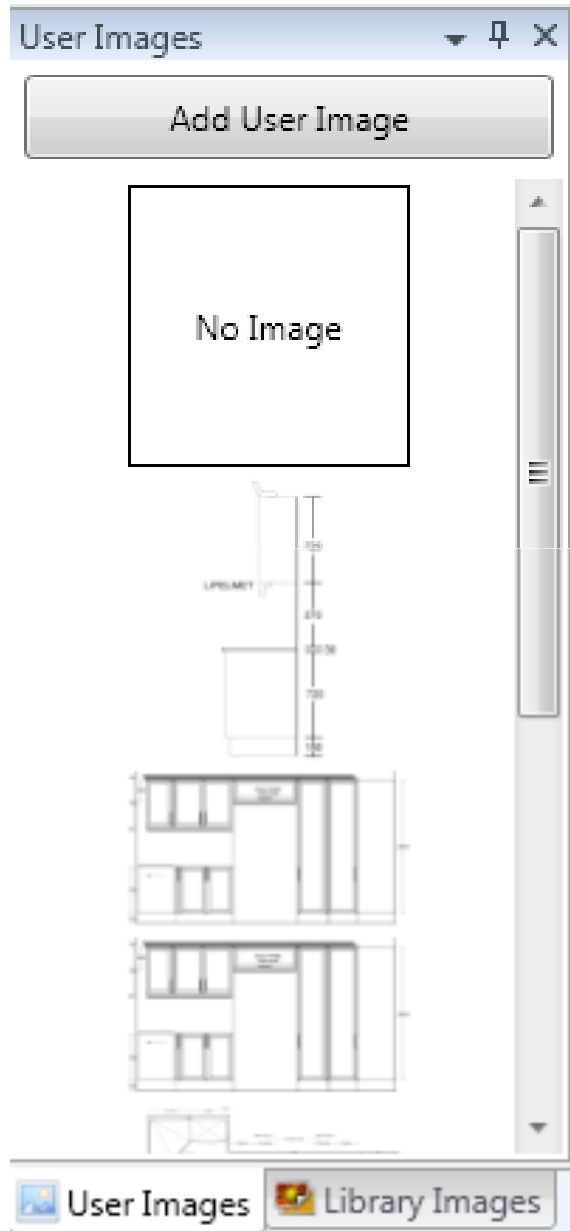
# Basic Interface



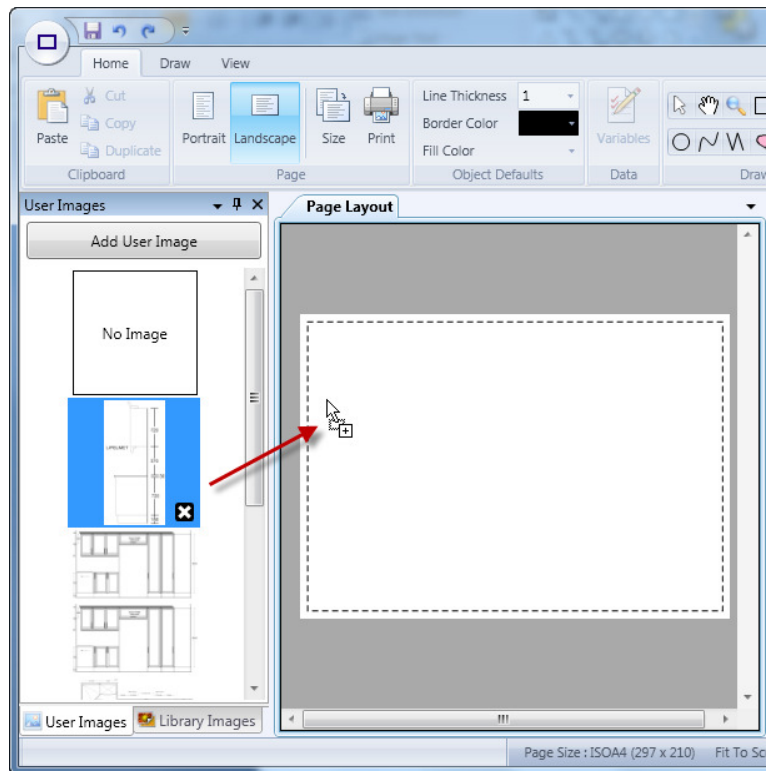
- A. User Images Window.** When Fusion designs are exported to PLP, the images will appear in this window. You can drag and drop images onto the canvas
- B. Library Images Window.** Add images such as logo's, letterheads, etc. that you want to be available in any design as library images.
- C. Canvas.** The area where the page is displayed and as well as the page content
- D. Status Bar or Bottom Bar.** Displays details about the canvas as well as quick function buttons
- E. Properties Window.** Displays properties of the current selected object on the canvas. You can change properties such as width and height depending on the object type.
- F. Ribbon Bar.** The main control bar for PLP.

# Create a Basic Layout

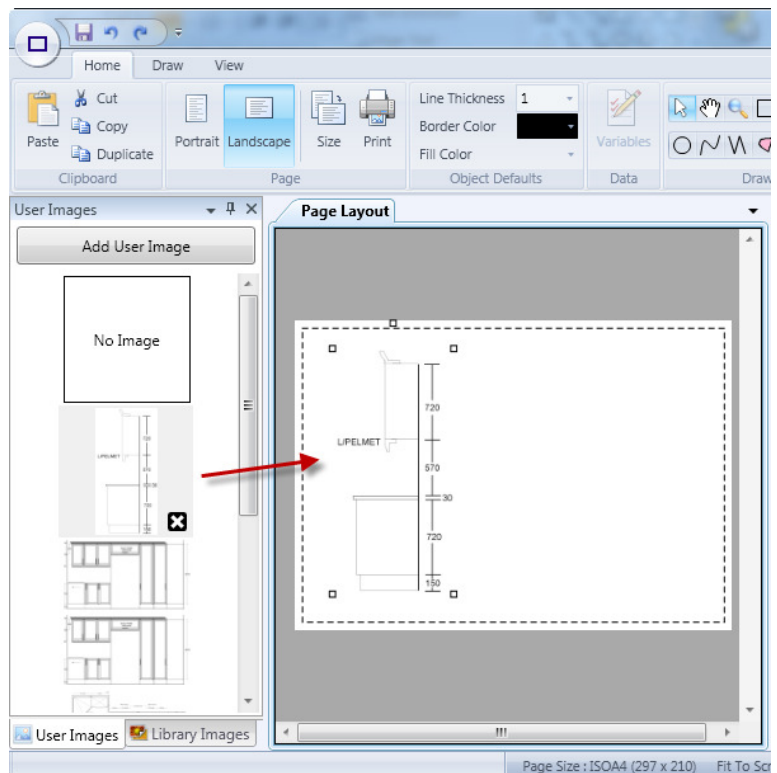
- Export your design from Fusion to Page Layout Pro
- The named views from Fusion will appear on the “User Images” window.
- If you have several named views you may need to scroll down the window to find the right image.



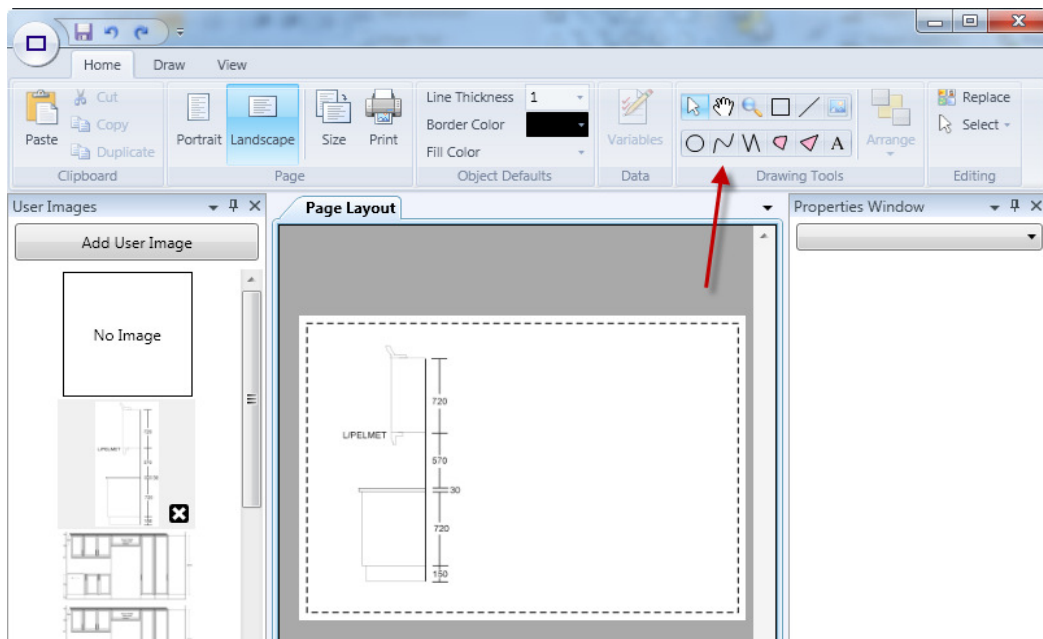
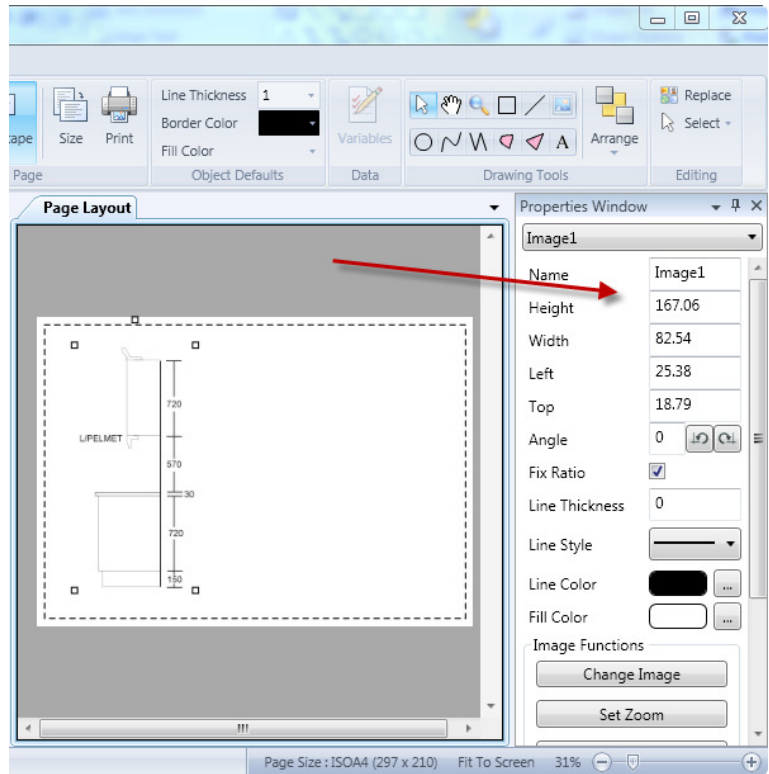
- On the “User Images” window select an image that you want to put on the page.
- Left click and drag it onto the canvas



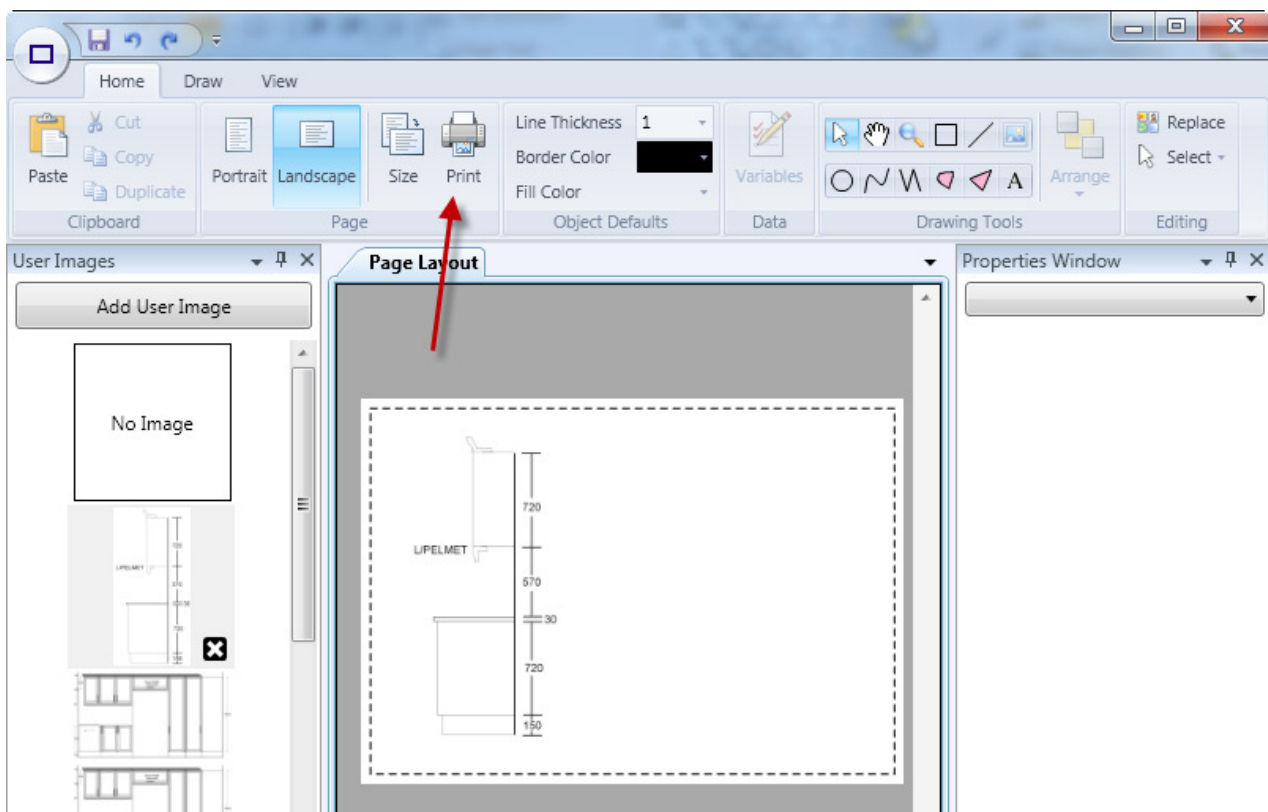
- The image will appear on the canvas.
- The image will also now be selected by default



- Because the image is now selected the properties window will have changed and will show the new images basic properties such as position and size



- You can also add other object to the page by clicking on the basic shape under “Drawing Tools” and then clicking on the canvas



- Once you are happy with you page layout click the “Print” button on the Ribbon Bar and the page will print.

---

And that is your first page layout!

For more in-depth tutorials you can view our online videos at

**[www.PageLayoutPro.com](http://www.PageLayoutPro.com)**